

# Brief Recap of Past 45 Days

---

- Flood potential in District --- 25 days
- Serious flash flood threats --- 13 days
- Flash flood warnings issued --- 3 days  
(July 8, 10 & 13)

*July 31 was the 25<sup>th</sup> anniversary of the Big Thompson Flood*

# Focus on Sunday, July 8

---

- The storm (rainfall & flooding conditions)
  - Human impacts
  - Performance of drainage and flood control facilities
    - Things that worked well
    - Things that could have worked better
-

# The Storm

---

- Denver was hardest hit
  - Streams & drainage systems impacted
    - Goldsmith Gulch
    - Harvard Gulch
    - Cherry Creek
    - I-25 (between Alameda & Evans)
-



# Human Impacts

---

- Cherry Creek Arts Festival
  - Interstate closed
  - Traffic problems at many locations
  - Parking lot/cars flooded
-

# Performance of Facilities

---

- Some things that worked well:
    - Goldsmith Gulch at Temple Pond, Rosamond Park, Highline Canal crossing, Bible Park, Iliff detention & improved channels
    - Harvard Gulch improved channels, road crossings, golf course detention & Logan Street outfall structure
    - Cherry Creek
-

# Performance of Facilities

---

- Some things that could have worked better:
    - NWS chose not to issue flash flood watch (flash flood warning was issued during event)
    - Plugged trash rack on Goldsmith Gulch at Iliff--- caused flooding of cars in parking lots and on streets (vicinity of Monaco and Evans--- apartments, K-mart, Walgreen's affected)
    - I-25 underpasses “Lake Logan” and Evans (T-REX expected to improve conditions)
-



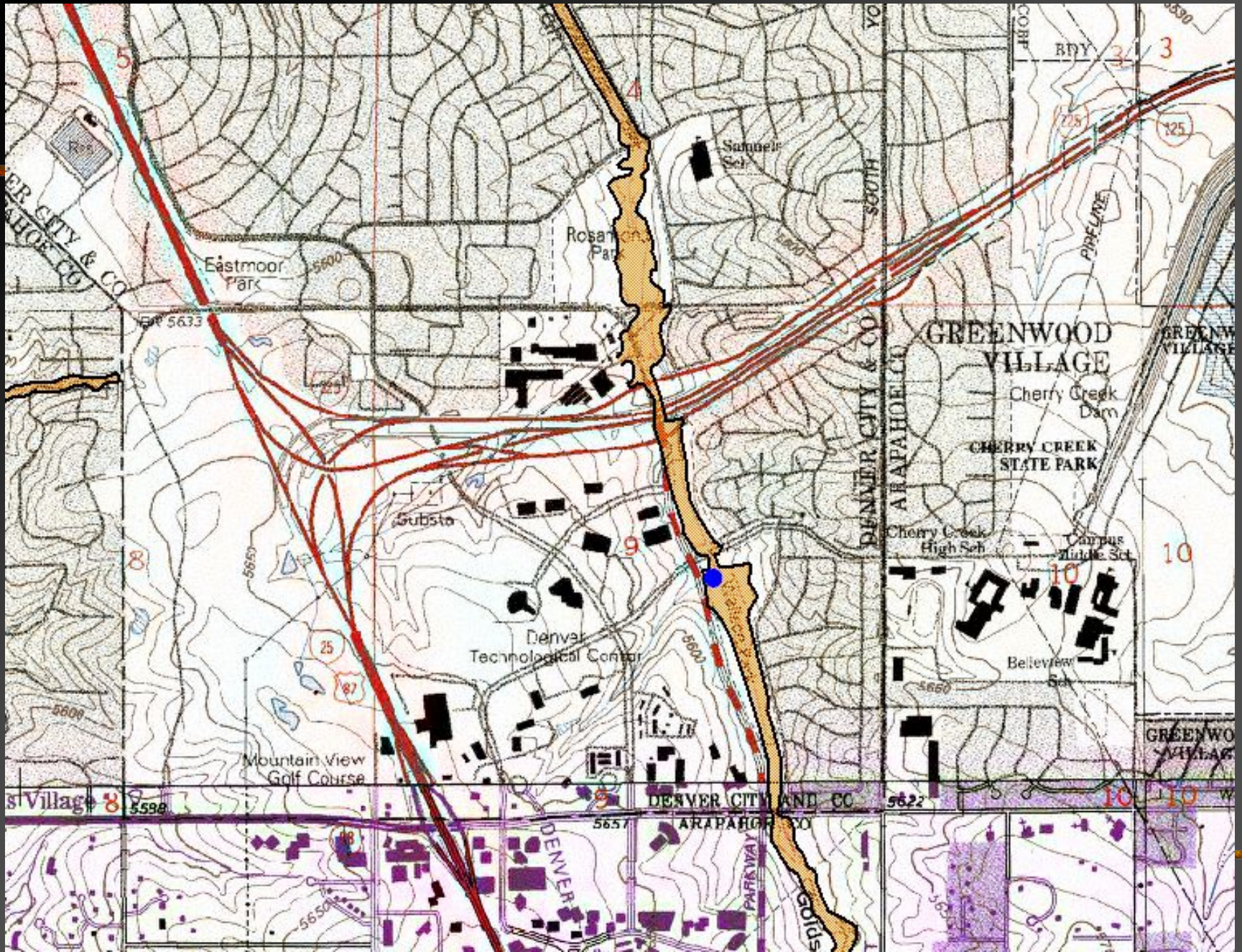
# Goldsmith Gulch

---

July 8, 2001 Flood Event



# Temple Pond at George Wallace Park in the DTC



# George Wallace Park at DTC a.k.a. Temple Pond



# ALERT Rain/Stage Gage at Temple Pond

Pointing at July 8, 2001  
high water mark





← ALERT gage

Debris line

← Level sensor

**Flow restrictor plates**

1/5/00

# Goldsmith Gulch at Rosamond Park & downstream along Tamarac



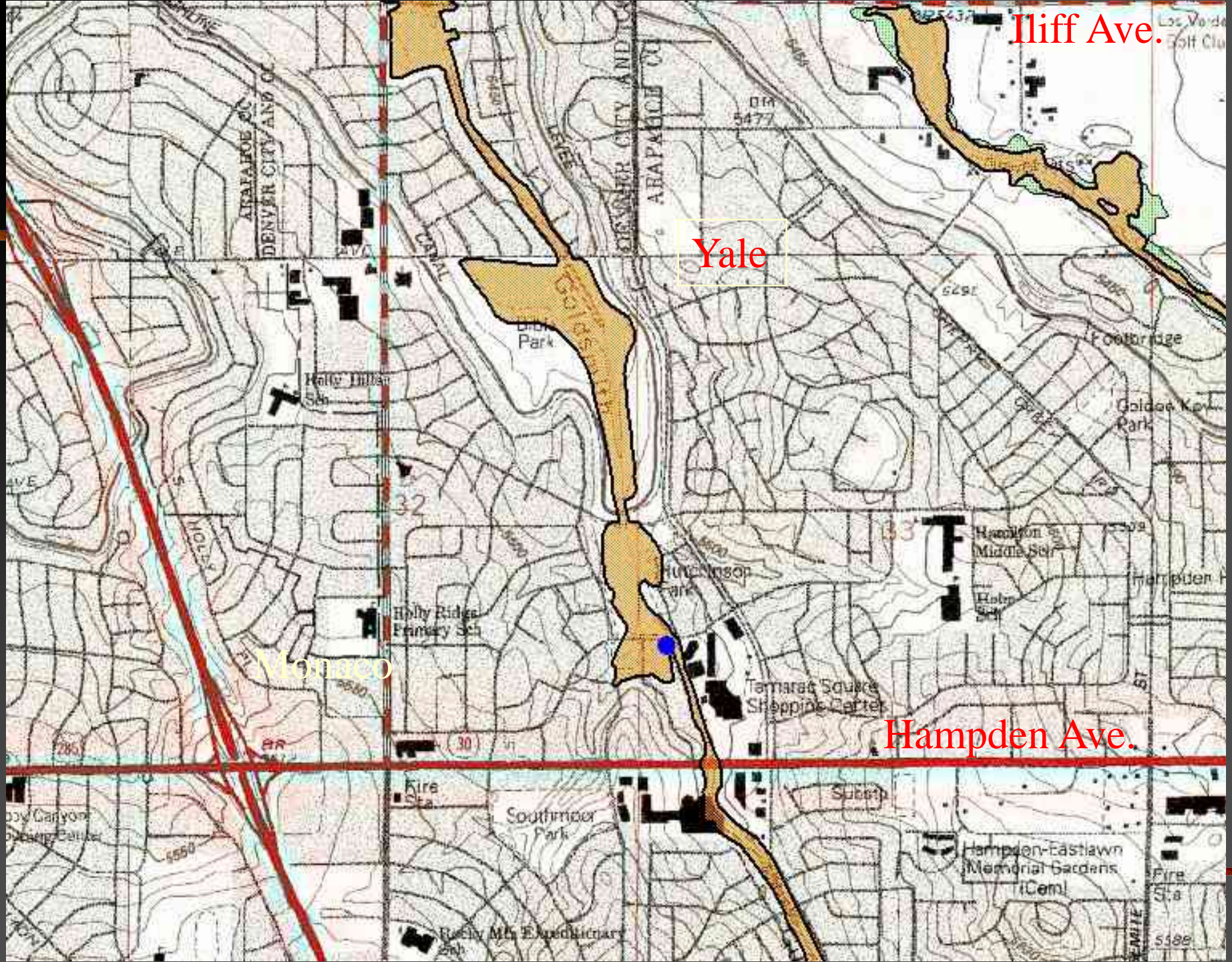
The day after...

Iliff Ave.

Yale

Monaco

Hampden Ave.



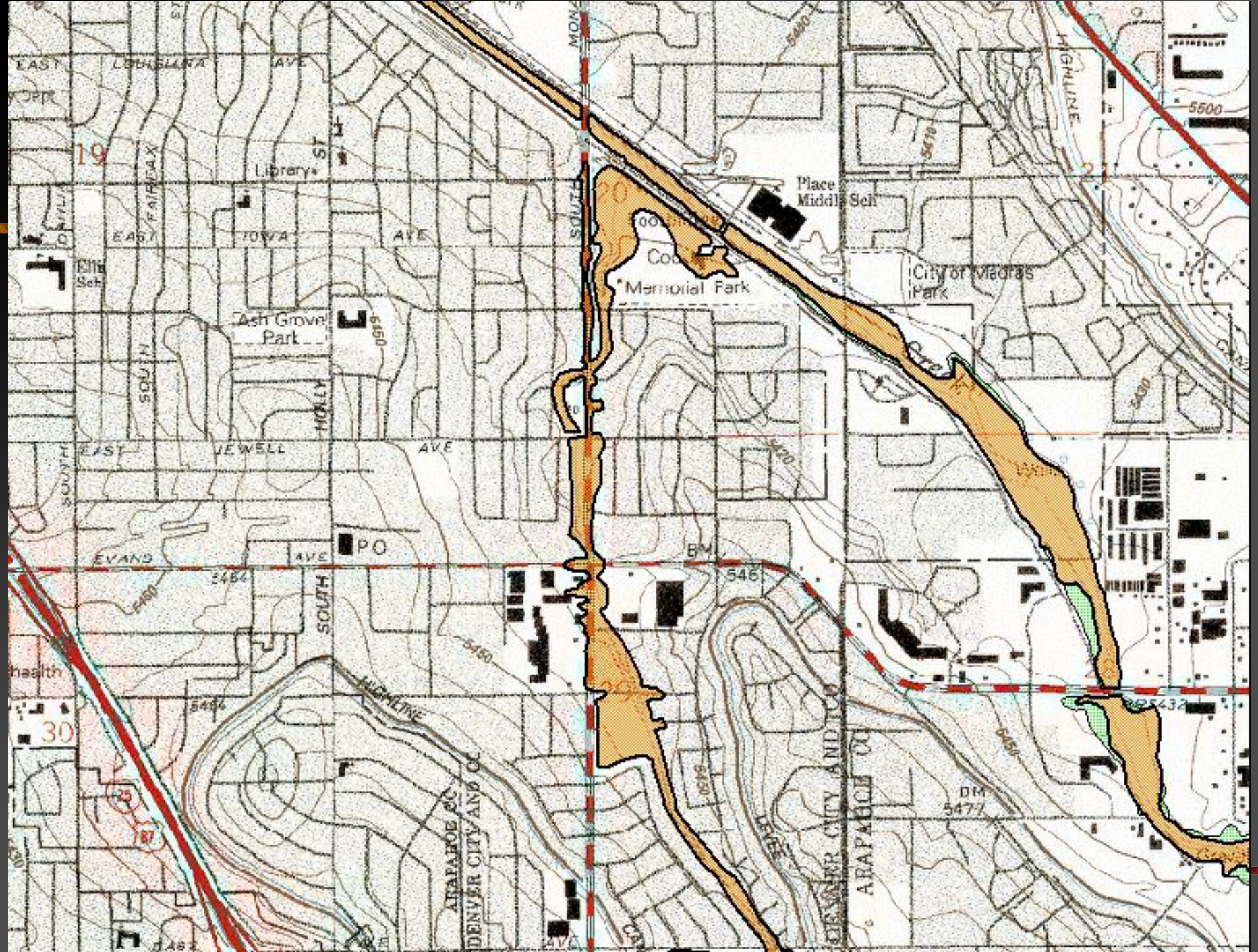
# Goldsmith Gulch culvert inlet at Tiffany Plaza



# Goldsmith Gulch at Eastman Avenue







EAST LOUISIANA AVE

19

EAST IOWA AVE

Library

EAST JEWELL AVE

Ash Grove Park

EAST EVANS AVE

SOUTH HOLLY ST

SOUTH MONARCH ST

20

Memorial Park

Place Middle School

City of Madras Park

HIGHLINE

5500

health

30

5484

HIGHLINE

ARAPAHOE CO  
DENVER CITY AND CO

BM 546

DENVER CITY AND CO  
ARAPAHOE CO

BM 5477

25432

# Iliff Detention Basin—offline storage facility (Monaco Street is left of photo)



# Iliff Detention Basin

---



Photo taken July 9...the next day  
Pumping in progress

---

# Goldsmith Gulch trash rack @ Iliff









# Apartments @ Iliff

High water at bottom of sign →





# Flooding near K-Mart at Monaco & Evans



# Monaco & Evans--Walgreens in background



# Goldsmith Gulch looking upstream from Jewell Avenue (Monaco is on left)



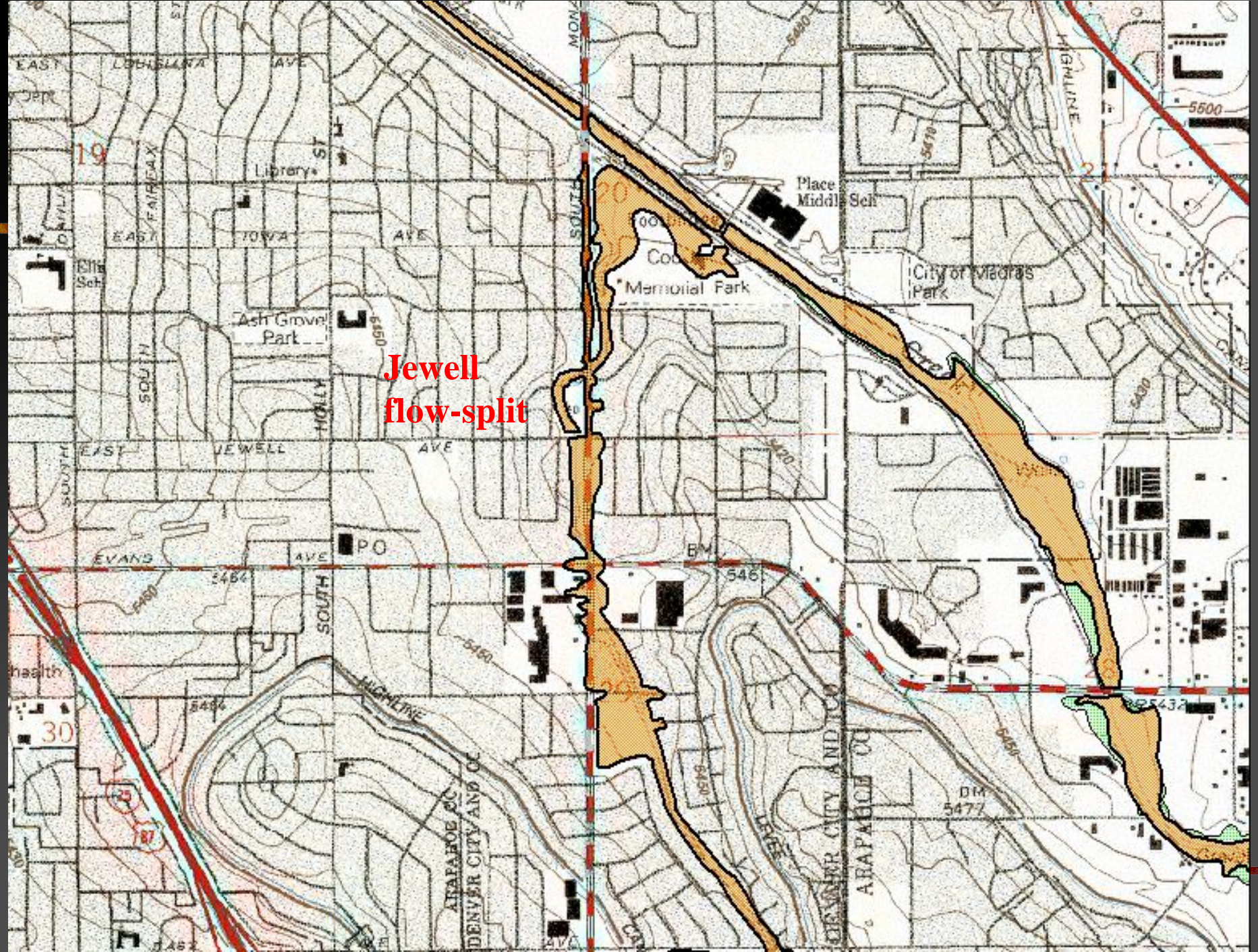
# Goldsmith at Jewell--the next day



# Goldsmith flow-splitter at Jewell



No damage to tennis club downstream.



**Jewell  
flow-split**

# Looking upstream from Mexico



JUL 8 2001

# Looking upstream from Mexico





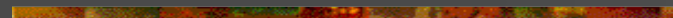
# Goldsmith Gulch at Cook Park



# Goldsmith Gulch at Cook Park



The next day...

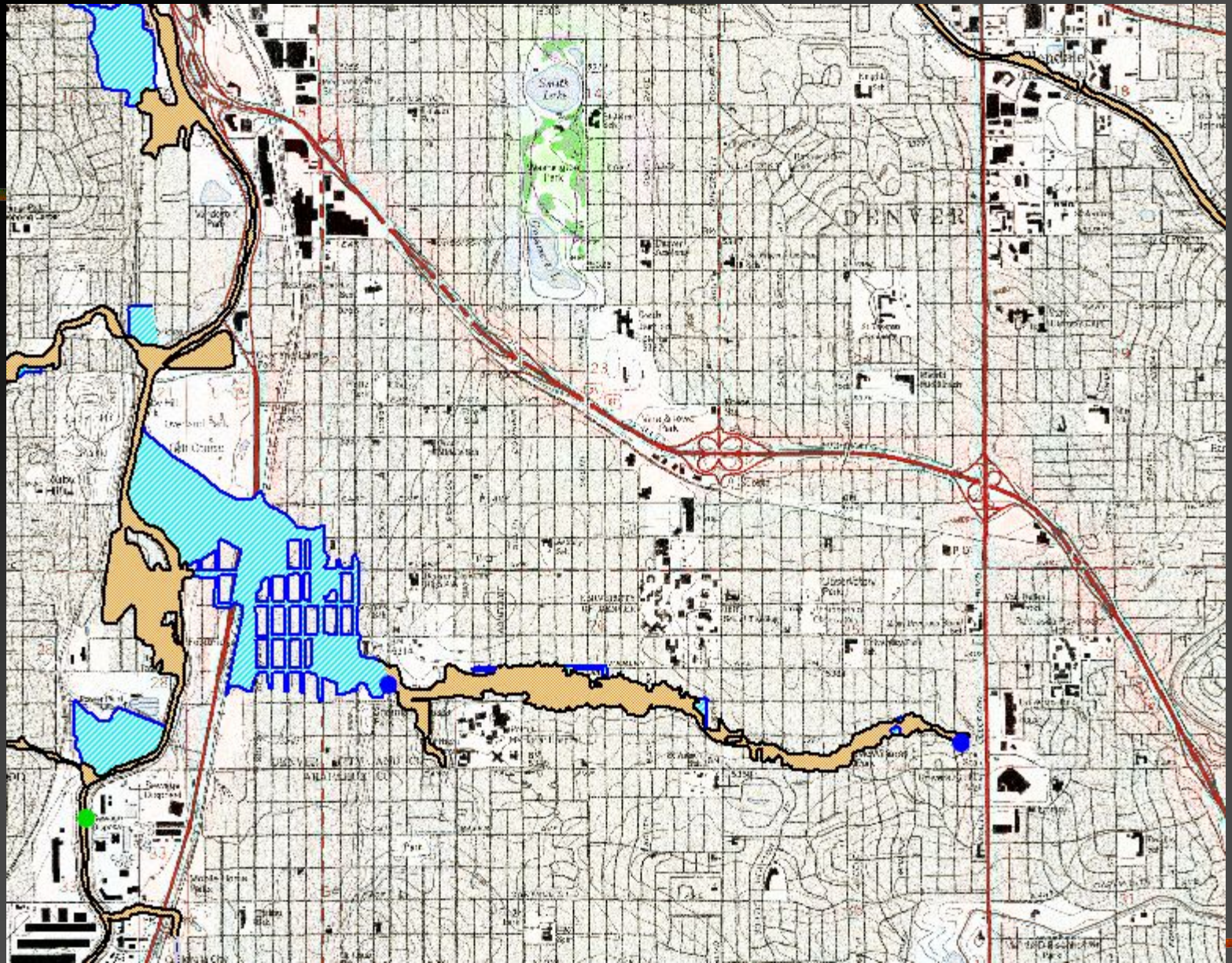




# Harvard Gulch

---

July 8, 2001 Flood Event



# Harvard Gulch at Jackson Street downstream of Colorado Blvd.



# Harvard Gulch at University



Tailwater at top of barrels

# Harvard Gulch upstream of Downing



High water 0.3'  
above manhole

# Harvard Gulch at side channel detention spillway near Hole #4 green—Harvard Gulch Park G.C.



Spillway  
0.8' OT  
↓



# Harvard Gulch at Logan St.

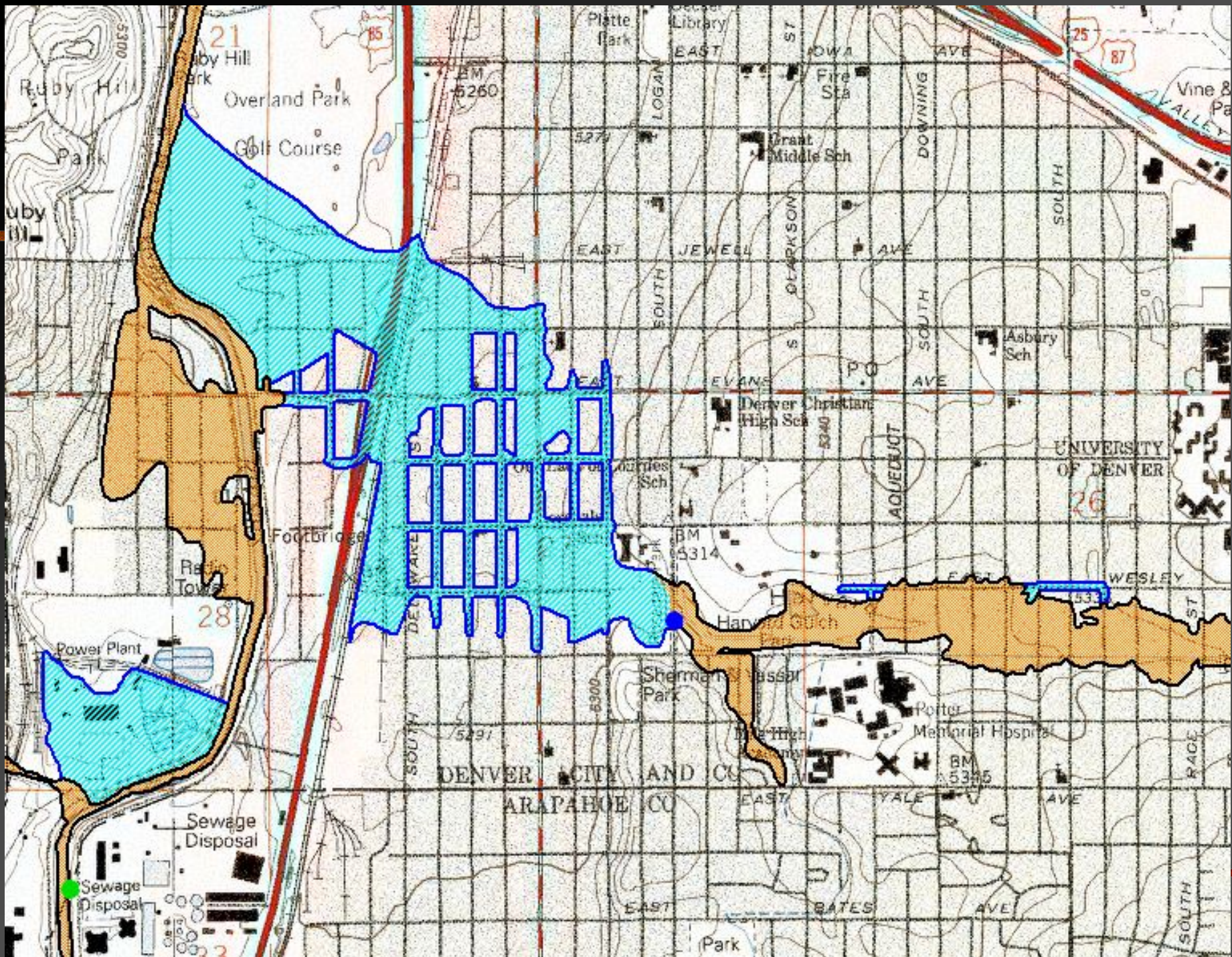




# Harvard Gulch at Logan Street a.k.a. Harvard Gulch Park



High water survey stakes





# Cherry Creek

---

July 8, 2001 Flood Event

# Cherry Creek upstream of Champa



Approximate depth 6.5'  
Peak flow 3,200 cfs



# I-25 'The Valley Highway'

---

July 8, 2001 Flooding

# Veterans Park near I-25 and University



Stormwater detention for I-25 drainage system...photo taken July 8



# 'Lake Logan' (I-25 underpass)



# Recreation at 'Lake Logan'

